

## Bilag 3

# FOCUS-LIGHTING

## Egedal\_landskabsby\_etape1\_EGE

Belysningsklasse: E2

Blå

Armatuur: NYX 330 Comfort 830

Profil: 3300lm

Mast: 5m

Orange

Armatuur: NYX 330 Comfort 830

Profil: 1500lm

Mast: 4m

Lilla

Armatuur: Turn Spot 38° 830

Profil: 1500lm

Mast: 5,5m

Placering: 5,1m, 4,7m og 4,3m

Tilt: maks. 35°

Rød

Armatuur: NYX 190 pullert 1200mm 6W 930

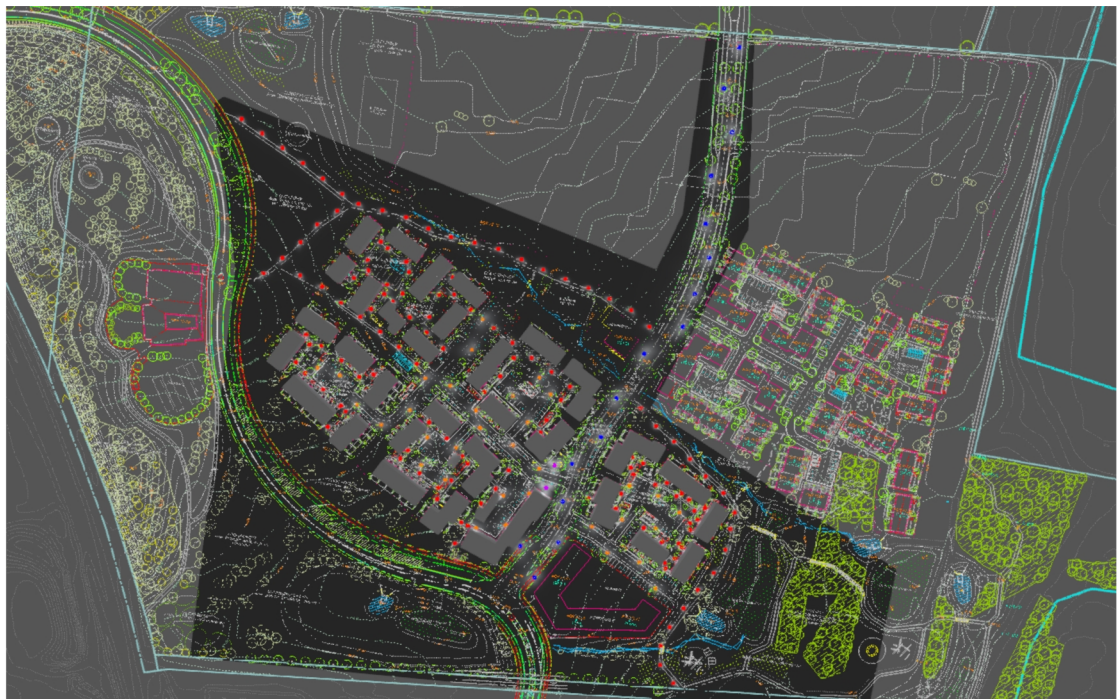
## Table of Contents

Cover .....	1
Table of Contents .....	2
Images .....	3

### Site 1

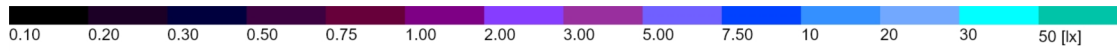
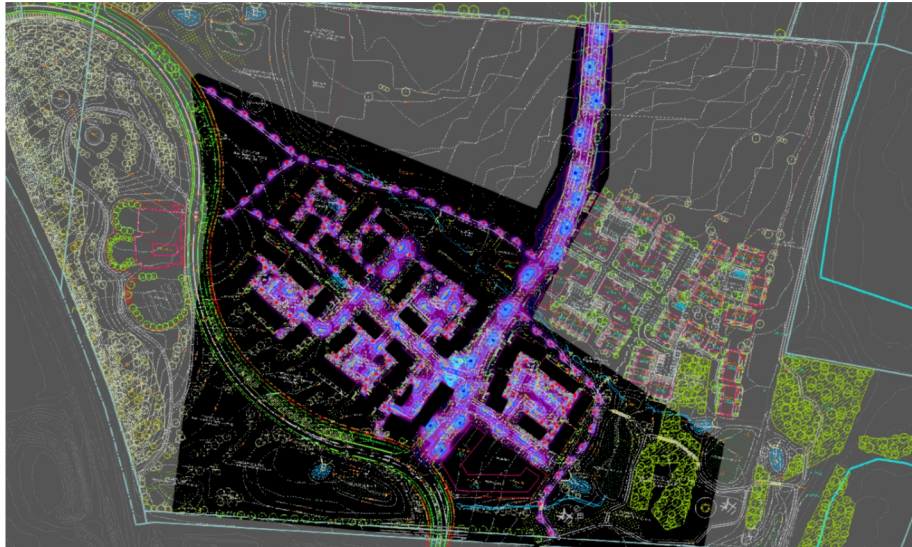
Luminaire layout plan .....	5
Luminaire list .....	22
Calculation objects / Light scene 1 .....	23
Bygade / Light scene 1 / Hemispherical illuminance .....	25
vej og p-plads / Light scene 1 / Hemispherical illuminance .....	26
Gårdrum / Light scene 1 / Hemispherical illuminance .....	27
p-plads / Light scene 1 / Hemispherical illuminance .....	28
Bygade / Light scene 1 / Hemispherical illuminance .....	29
p-plads / Light scene 1 / Hemispherical illuminance .....	30
Stræde / Light scene 1 / Hemispherical illuminance .....	31
Sti / Light scene 1 / Hemispherical illuminance .....	32
P-plads Erhverv / Light scene 1 / Hemispherical illuminance .....	33

## Images





## Images



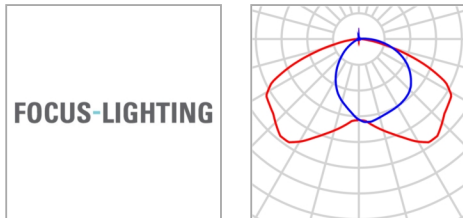
Site 1

### Luminaire layout plan



Site 1

## Luminaire layout plan



Manufacturer	FOCUS LIGHTING	P	37.5 W
Article name	Nyx 330_Comfort_830	$\Phi$ Luminaire	2446 lm
Fitting	1x FF2x6/830DAg5_945 mA		

### Individual luminaires

X	Y	Mounting height	Luminaire
623.938 m	927.724 m	5.000 m	71
619.141 m	902.385 m	5.000 m	72
629.098 m	877.717 m	5.000 m	73
621.026 m	850.073 m	5.000 m	74
622.980 m	820.995 m	5.000 m	78
628.617 m	801.419 m	5.000 m	82
623.823 m	778.009 m	5.000 m	93
620.415 m	756.824 m	5.000 m	101
599.591 m	736.684 m	5.000 m	109
587.111 m	706.546 m	5.000 m	117
581.901 m	680.774 m	5.000 m	129
566.619 m	660.923 m	5.000 m	141
564.856 m	636.530 m	5.000 m	162

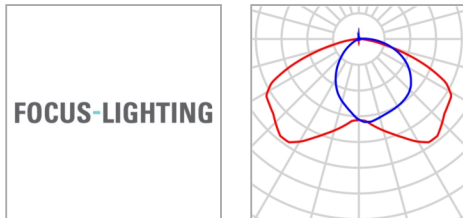
Site 1

**Luminaire layout plan**

X	Y	Mounting height	Luminaire
566.454 m	610.124 m	5.000 m	175
543.048 m	603.460 m	5.000 m	180
555.225 m	585.545 m	5.000 m	184

Site 1

## Luminaire layout plan



Manufacturer	FOCUS LIGHTING	P	17.0 W
Article name	Nyx 330_Comfort_830	$\Phi$ Luminaire	1110 lm
Fitting	1x FF2x6/830DAg5_945 mA		

### Individual luminaires

X	Y	Mounting height	Luminaire
497.441 m	741.366 m	4.000 m	106
493.599 m	721.885 m	4.000 m	112
537.573 m	710.941 m	4.000 m	115
546.259 m	701.887 m	4.000 m	119
467.883 m	699.563 m	4.000 m	120
523.268 m	697.485 m	4.000 m	121
484.442 m	697.281 m	4.000 m	122
401.115 m	694.766 m	4.000 m	123
415.262 m	692.372 m	4.000 m	125
501.788 m	684.481 m	4.000 m	127
534.891 m	682.441 m	4.000 m	128
461.336 m	677.954 m	4.000 m	130
428.013 m	676.097 m	4.000 m	132

Site 1

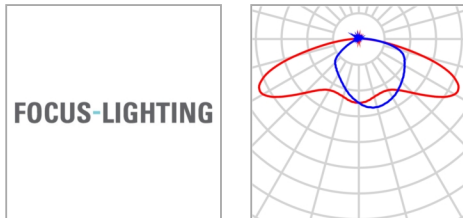
## Luminaire layout plan

X	Y	Mounting height	Luminaire
506.175 m	674.076 m	4.000 m	134
527.883 m	666.687 m	4.000 m	137
445.159 m	665.733 m	4.000 m	139
474.872 m	662.839 m	4.000 m	140
493.500 m	659.426 m	4.000 m	142
546.716 m	654.666 m	4.000 m	145
604.645 m	653.581 m	4.000 m	148
623.461 m	650.209 m	4.000 m	151
473.682 m	644.941 m	4.000 m	154
638.480 m	641.706 m	4.000 m	155
489.888 m	638.146 m	4.000 m	158
543.123 m	637.674 m	4.000 m	159
526.961 m	634.391 m	4.000 m	163
603.757 m	631.141 m	4.000 m	165
625.683 m	628.939 m	4.000 m	166
585.518 m	623.613 m	4.000 m	168
531.679 m	615.565 m	4.000 m	171
513.746 m	610.874 m	4.000 m	174
598.046 m	608.680 m	4.000 m	176
619.006 m	605.692 m	4.000 m	178
631.962 m	590.850 m	4.000 m	182



Site 1

## Luminaire layout plan



Manufacturer	FOCUS LIGHTING	P	5.8 W
Article name	Nyx190_6W_930_Bollard	$\Phi_{\text{Luminaire}}$	345 lm
Fitting	1x 2xV6, 30G0400-B-83_250mA		

### PULLERT

Type	Line arrangement	X	Y	Mounting height	Luminaire
1st luminaire (X/Y/Z)	528.731 m / 650.151 m / 1.200 m	528.731 m	650.151 m	1.200 m	52
X-direction	2 pcs., Centre - centre, 14.000 m	522.505 m	637.611 m	1.200 m	53
Arrangement	A1				

### PULLERT

Type	Line arrangement	X	Y	Mounting height	Luminaire
1st luminaire (X/Y/Z)	502.190 m / 599.162 m / 1.200 m	502.190 m	599.162 m	1.200 m	69
X-direction	2 pcs., Centre - centre, Distances not equal	508.447 m	611.521 m	1.200 m	70
Arrangement	A2				

### PULLERT

## Site 1

## Luminaire layout plan

Type	Line arrangement	X	Y	Mounting height	Luminaire
1st luminaire (X/Y/Z)	653.278 m / 649.251 m / 1.200 m	641.815 m	621.755 m	1.200 m	63
X-direction	4 pcs., Centre - centre, Distances not equal	653.278 m	649.251 m	1.200 m	64
		635.510 m	608.096 m	1.200 m	65
Arrangement	A5	646.689 m	635.945 m	1.200 m	66

## PULLERT

Type	Line arrangement	X	Y	Mounting height	Luminaire
1st luminaire (X/Y/Z)	647.771 m / 644.276 m / 1.200 m	647.771 m	644.276 m	1.200 m	48
X-direction	4 pcs., Centre - centre, Distances not equal	605.983 m	660.499 m	1.200 m	49
		620.466 m	656.456 m	1.200 m	50
Arrangement	A6	634.582 m	651.338 m	1.200 m	51

## PULLERT

Type	Line arrangement	X	Y	Mounting height	Luminaire
1st luminaire (X/Y/Z)	631.258 m / 621.148 m / 1.200 m	631.258 m	621.148 m	1.200 m	67
X-direction	2 pcs., Centre - centre, 15.000 m	618.052 m	628.260 m	1.200 m	68
Arrangement	A7				

## PULLERT

Type	Line arrangement	X	Y	Mounting height	Luminaire
1st luminaire (X/Y/Z)	557.476 m / 708.392 m / 1.200 m	557.476 m	708.392 m	1.200 m	20
		531.008 m	722.514 m	1.200 m	21

## Site 1

## Luminaire layout plan

X-direction	5 pcs., Centre - centre, Distances not equal	X	Y	Mounting height	Luminaire
		517.773 m	729.574 m	1.200 m	22
Arrangement	A8	544.390 m	715.765 m	1.200 m	23
		504.865 m	736.960 m	1.200 m	24

## PULLERT

Type	Line arrangement	X	Y	Mounting height	Luminaire
1st luminaire (X/Y/Z)	546.285 m / 686.034 m / 1.200 m	546.285 m	686.034 m	1.200 m	34
X-direction	2 pcs., Centre - centre, 15.000 m	553.190 m	699.349 m	1.200 m	35
Arrangement	A9				

## PULLERT

Type	Line arrangement	X	Y	Mounting height	Luminaire
1st luminaire (X/Y/Z)	505.616 m / 696.839 m / 1.200 m	505.616 m	696.839 m	1.200 m	25
X-direction	3 pcs., Centre - centre, Distances not equal	520.237 m	720.719 m	1.200 m	26
		513.777 m	708.172 m	1.200 m	27
Arrangement	A10				

## PULLERT

Type	Line arrangement	X	Y	Mounting height	Luminaire
1st luminaire (X/Y/Z)	486.301 m / 625.071 m / 1.200 m	493.377 m	638.219 m	1.200 m	60
X-direction	3 pcs., Centre - centre, Distances not equal	486.301 m	625.071 m	1.200 m	61
		502.124 m	650.512 m	1.200 m	62

Site 1

## Luminaire layout plan

Arrangement A11

---

### PULLERT

Type	Line arrangement	X	Y	Mounting height	Luminaire
1st luminaire (X/Y/Z)	459.964 m / 646.483 m / 1.200 m	459.964 m	646.483 m	1.200 m	57
X-direction	3 pcs., Centre - centre, 15.000 m	473.242 m	639.505 m	1.200 m	58
		486.520 m	632.527 m	1.200 m	59
Arrangement	A12				

### PULLERT

Type	Line arrangement	X	Y	Mounting height	Luminaire
1st luminaire (X/Y/Z)	401.486 m / 708.640 m / 1.200 m	415.108 m	701.736 m	1.200 m	30
X-direction	3 pcs., Centre - centre, Distances not equal	427.604 m	693.439 m	1.200 m	31
		401.486 m	708.640 m	1.200 m	32
Arrangement	A13				

### PULLERT

Type	Line arrangement	X	Y	Mounting height	Luminaire
1st luminaire (X/Y/Z)	418.687 m / 673.521 m / 1.200 m	418.687 m	673.521 m	1.200 m	36
X-direction	3 pcs., Centre - centre, 15.000 m	406.211 m	681.848 m	1.200 m	37
		393.735 m	690.175 m	1.200 m	38
Arrangement	A14				

### PULLERT

Type	Line arrangement	X	Y	Mounting height	Luminaire

## Site 1

## Luminaire layout plan

1st luminaire (X/Y/Z)	387.397 m / 696.259 m / 1.200 m	X	Y	Mounting height	Luminaire
X-direction	2 pcs., Centre - centre, 14.000 m	387.397 m	696.259 m	1.200 m	28
Arrangement	A15	394.172 m	708.510 m	1.200 m	29

## PULLERT

Type	Line arrangement	X	Y	Mounting height	Luminaire
1st luminaire (X/Y/Z)	412.331 m / 659.308 m / 1.200 m	412.331 m	659.308 m	1.200 m	41
X-direction	2 pcs., Centre - centre, Distances not equal	421.895 m	670.863 m	1.200 m	42
Arrangement	A16				

## PULLERT

Type	Line arrangement	X	Y	Mounting height	Luminaire
1st luminaire (X/Y/Z)	475.486 m / 763.389 m / 1.200 m	468.478 m	751.658 m	1.200 m	6
X-direction	2 pcs., Centre - centre, Distances not equal	475.486 m	763.389 m	1.200 m	7
Arrangement	A17				

## PULLERT

Type	Line arrangement	X	Y	Mounting height	Luminaire
1st luminaire (X/Y/Z)	477.653 m / 753.715 m / 1.200 m	477.653 m	753.715 m	1.200 m	12
X-direction	2 pcs., Centre - centre, 14.000 m	489.260 m	745.888 m	1.200 m	13
Arrangement	A18				

Site 1

## Luminaire layout plan

### PULLERT

Type	Line arrangement	X	Y	Mounting height	Luminaire
1st luminaire (X/Y/Z)	475.894 m / 719.622 m / 1.200 m	475.894 m	719.622 m	1.200 m	16
X-direction	4 pcs., Centre - centre, 14.000 m	464.247 m	727.390 m	1.200 m	17
		452.599 m	735.157 m	1.200 m	18
Arrangement	A19	440.951 m	742.925 m	1.200 m	19

### PULLERT

Type	Line arrangement	X	Y	Mounting height	Luminaire
1st luminaire (X/Y/Z)	428.715 m / 777.758 m / 1.200 m	428.715 m	777.758 m	1.200 m	3
X-direction	3 pcs., Centre - centre, 14.000 m	422.221 m	765.356 m	1.200 m	4
		415.727 m	752.953 m	1.200 m	5
Arrangement	A20				

### PULLERT

Type	Line arrangement	X	Y	Mounting height	Luminaire
1st luminaire (X/Y/Z)	448.370 m / 762.420 m / 1.200 m	448.370 m	762.420 m	1.200 m	10
X-direction	2 pcs., Centre - centre, 14.000 m	446.399 m	748.559 m	1.200 m	11
Arrangement	A21				

### PULLERT

Type	Line arrangement	X	Y	Mounting height	Luminaire
1st luminaire (X/Y/Z)	428.493 m / 736.327 m / 1.200 m	428.493 m	736.327 m	1.200 m	14



## Site 1

## Luminaire layout plan

X-direction	2 pcs., Centre - centre, Distances not equal	X	Y	Mounting height	Luminaire
Arrangement	A22	435.478 m	746.733 m	1.200 m	15

## PULLERT

Type	Line arrangement	X	Y	Mounting height	Luminaire
1st luminaire (X/Y/Z)	436.041 m / 696.240 m / 1.200 m	436.041 m	696.240 m	1.200 m	33
X-direction	1 pcs., Centre - centre, 14.000 m				
Arrangement	A23				

## PULLERT

Type	Line arrangement	X	Y	Mounting height	Luminaire
1st luminaire (X/Y/Z)	600.491 m / 647.590 m / 1.200 m	603.410 m	665.149 m	1.200 m	46
X-direction	2 pcs., Centre - centre, Distances not equal	600.491 m	647.590 m	1.200 m	47
Arrangement	A24				

## PULLERT

Type	Line arrangement	X	Y	Mounting height	Luminaire
1st luminaire (X/Y/Z)	433.360 m / 774.879 m / 1.200 m	433.360 m	774.879 m	1.200 m	1
X-direction	2 pcs., Centre - centre, 14.000 m	445.779 m	768.416 m	1.200 m	2
Arrangement	A25				

Site 1

## Luminaire layout plan

### PULLERT

Type	Line arrangement	X	Y	Mounting height	Luminaire
1st luminaire (X/Y/Z)	423.599 m / 759.148 m / 1.200 m	423.599 m	759.148 m	1.200 m	8
X-direction	2 pcs., Centre - centre, 14.000 m	436.143 m	752.933 m	1.200 m	9
Arrangement	A26				

### PULLERT

Type	Line arrangement	X	Y	Mounting height	Luminaire
1st luminaire (X/Y/Z)	474.262 m / 672.274 m / 1.200 m	474.262 m	672.274 m	1.200 m	39
X-direction	2 pcs., Centre - centre, 15.000 m	486.773 m	663.999 m	1.200 m	40
Arrangement	A27				

### Individual luminaires

X	Y	Mounting height	Luminaire
334.487 m	836.964 m	1.200 m	75
348.022 m	830.498 m	1.200 m	76
361.524 m	823.964 m	1.200 m	77
374.814 m	817.012 m	1.200 m	79
388.022 m	809.904 m	1.200 m	80
401.114 m	802.581 m	1.200 m	81
411.727 m	798.020 m	1.200 m	83
426.680 m	796.841 m	1.200 m	84

Site 1

## Luminaire layout plan

X	Y	Mounting height	Luminaire
441.424 m	794.912 m	1.200 m	85
399.003 m	791.630 m	1.200 m	86
456.172 m	790.572 m	1.200 m	87
470.444 m	787.958 m	1.200 m	88
485.363 m	786.700 m	1.200 m	89
500.310 m	785.400 m	1.200 m	90
388.107 m	781.405 m	1.200 m	91
515.280 m	781.380 m	1.200 m	92
529.341 m	777.545 m	1.200 m	94
543.888 m	773.949 m	1.200 m	95
558.592 m	771.090 m	1.200 m	96
379.578 m	768.996 m	1.200 m	97
572.754 m	766.509 m	1.200 m	98
587.220 m	761.848 m	1.200 m	99
369.860 m	757.595 m	1.200 m	100
599.795 m	753.638 m	1.200 m	102
382.362 m	749.765 m	1.200 m	103
359.765 m	746.500 m	1.200 m	104
396.536 m	744.857 m	1.200 m	105
409.204 m	737.170 m	1.200 m	107
464.763 m	737.101 m	1.200 m	108
422.534 m	730.291 m	1.200 m	110
435.864 m	723.412 m	1.200 m	111
448.781 m	715.849 m	1.200 m	113

Site 1

## Luminaire layout plan

X	Y	Mounting height	Luminaire
391.295 m	714.229 m	1.200 m	114
461.091 m	707.278 m	1.200 m	116
602.981 m	702.256 m	1.200 m	118
614.089 m	692.378 m	1.200 m	124
626.948 m	684.754 m	1.200 m	126
544.141 m	677.479 m	1.200 m	131
638.576 m	675.436 m	1.200 m	133
603.329 m	671.181 m	1.200 m	135
610.497 m	668.565 m	1.200 m	136
650.310 m	666.382 m	1.200 m	138
627.589 m	658.866 m	1.200 m	143
663.109 m	658.214 m	1.200 m	144
498.255 m	654.340 m	1.200 m	146
637.719 m	653.633 m	1.200 m	147
463.936 m	652.513 m	1.200 m	149
643.683 m	650.795 m	1.200 m	150
673.148 m	647.390 m	1.200 m	152
654.224 m	646.960 m	1.200 m	153
580.522 m	641.662 m	1.200 m	156
650.731 m	639.124 m	1.200 m	157
598.681 m	637.621 m	1.200 m	160
672.116 m	636.746 m	1.200 m	161
647.455 m	631.873 m	1.200 m	164
514.597 m	626.921 m	1.200 m	167

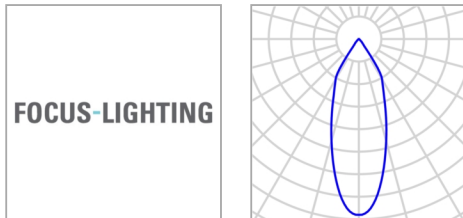
Site 1

**Luminaire layout plan**

X	Y	Mounting height	Luminaire
671.821 m	623.031 m	1.200 m	169
643.975 m	619.624 m	1.200 m	170
504.416 m	612.703 m	1.200 m	172
640.937 m	611.892 m	1.200 m	173
666.773 m	607.219 m	1.200 m	177
636.426 m	604.395 m	1.200 m	179
658.919 m	594.441 m	1.200 m	181
504.838 m	588.460 m	1.200 m	183
651.990 m	581.143 m	1.200 m	185
645.392 m	567.674 m	1.200 m	186
641.915 m	554.761 m	1.200 m	187
643.948 m	541.654 m	1.200 m	188
654.319 m	531.509 m	1.200 m	189

Site 1

## Luminaire layout plan



Manufacturer	FOCUS LIGHTING	P	10.2 W
Article name	Turn_38grW_830	$\Phi$ Luminaire	1187 lm
Fitting	1x V18_30E4000-C-83_900mA		

### 3 x FOCUS LIGHTING Turn\_38grW\_830

Type	Circle Arrangement	X	Y	Mounting height	Luminaire
1st luminaire (X/Y/Z)	553.315 m / 643.381 m / 5.100 m	553.013 m	643.207 m	4.300 m	54
Arrangement	A3	553.013 m	643.555 m	4.700 m	55
		553.315 m	643.381 m	5.100 m	56

### 3 x FOCUS LIGHTING Turn\_38grW\_830

Type	Circle Arrangement	X	Y	Mounting height	Luminaire
1st luminaire (X/Y/Z)	556.236 m / 658.448 m / 5.100 m	555.934 m	658.274 m	4.300 m	43
Arrangement	A4	555.934 m	658.622 m	4.700 m	44
		556.236 m	658.448 m	5.100 m	45



Site 1

**Luminaire list**

$\Phi_{\text{total}}$ 129883 lm	$P_{\text{total}}$ 2010.6 W	Luminous efficacy 64.6 lm/W
------------------------------------	--------------------------------	--------------------------------

pcs.	Manufacturer	Article No.	Article name	P	$\Phi$	Luminous efficacy
16	FOCUS LIGHTING		Nyx 330_Comfort_830	37.5 W	2446 lm	65.2 lm/W
34	FOCUS LIGHTING		Nyx 330_Comfort_830	17.0 W	1110 lm	65.2 lm/W
133	FOCUS LIGHTING		Nyx190_6W_930_Bollard	5.8 W	345 lm	59.0 lm/W
6	FOCUS LIGHTING		Turn_38grW_830	10.2 W	1187 lm	115.9 lm/W

Site 1 (Light scene 1)

### Calculation objects



Site 1 (Light scene 1)

**Calculation objects**

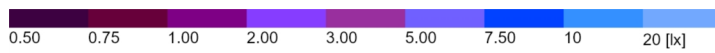
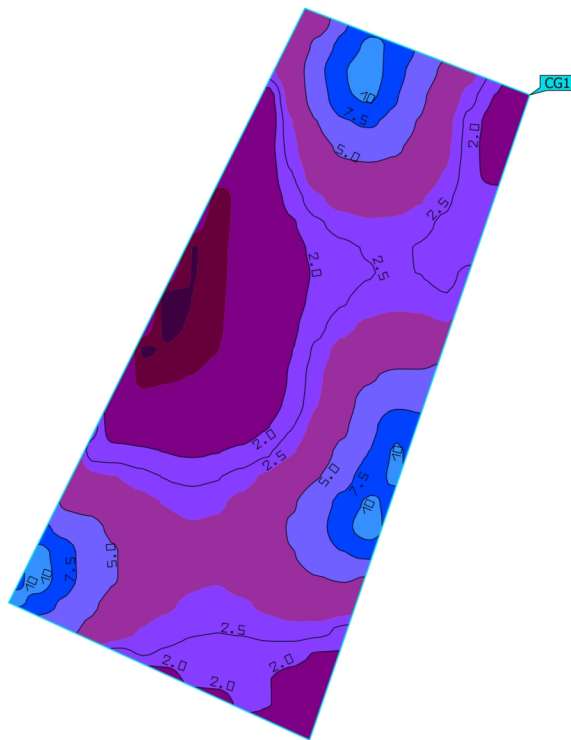
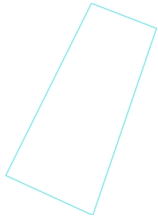
## Calculation surfaces

Properties	$\bar{E}$	$E_{min}$	$E_{max}$	$U_o (g_1)$	$g_2$	Index
Bygade Hemispherical illuminance Height: 0.000 m	3.55 lx	0.61 lx	11.5 lx	0.17	0.053	CG1
vej og p-plads Hemispherical illuminance Height: 0.000 m	2.56 lx	0.66 lx	7.84 lx	0.26	0.084	CG2
Gårdrum Hemispherical illuminance Height: 0.000 m	3.06 lx	1.24 lx	12.9 lx	0.41	0.096	CG3
p-plads Hemispherical illuminance Height: -0.000 m	2.87 lx	0.77 lx	9.48 lx	0.27	0.081	CG4
Bygade Hemispherical illuminance Height: -0.000 m	3.17 lx	0.66 lx	11.2 lx	0.21	0.059	CG5
p-plads Hemispherical illuminance Height: -0.000 m	2.78 lx	0.56 lx	8.14 lx	0.20	0.069	CG6
Stræde Hemispherical illuminance Height: -0.000 m	2.78 lx	0.94 lx	8.14 lx	0.34	0.12	CG7
Sti Hemispherical illuminance Height: 0.000 m	2.63 lx	0.52 lx	4.96 lx	0.20	0.10	CG8
P-plads Erhverv Hemispherical illuminance Height: 0.000 m	3.15 lx	0.87 lx	9.28 lx	0.28	0.094	CG9

Utilisation profile: DIALux presetting (5.1.4 Standard (outdoor transportation area))

Site 1 (Light scene 1)

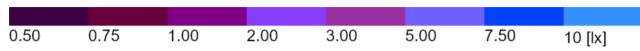
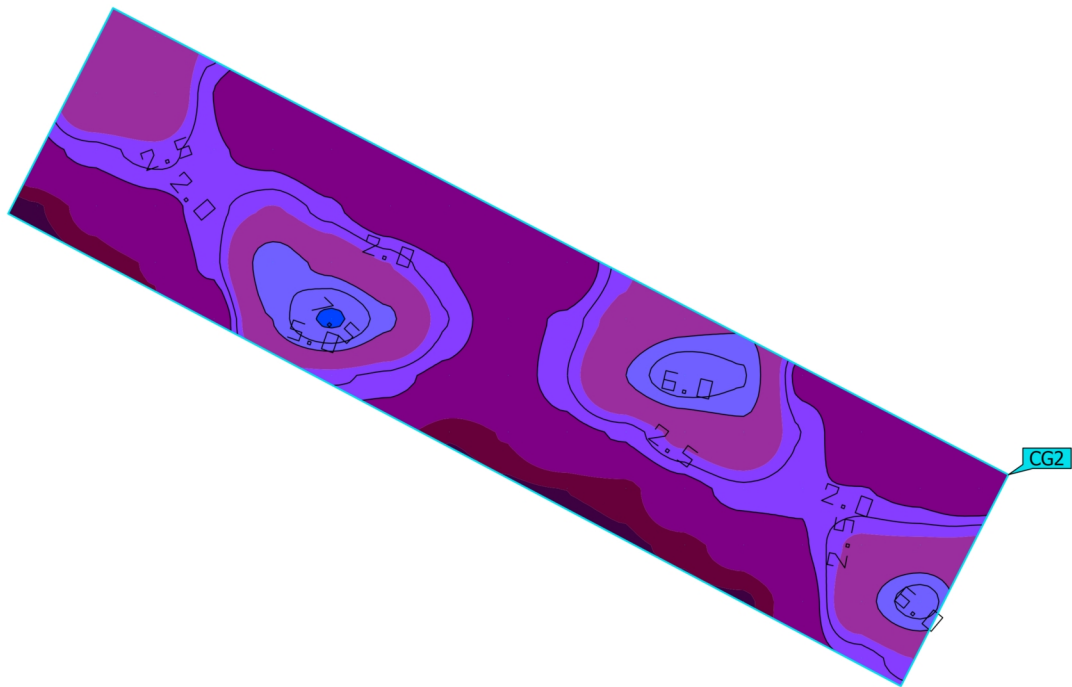
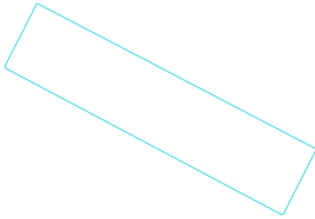
**Bygade**



Properties	$\bar{E}$	$E_{min}$	$E_{max}$	$U_o (g_1)$	$g_2$	Index
Bygade Hemispherical illuminance Height: 0.000 m	3.55 lx	0.61 lx	11.5 lx	0.17	0.053	CG1

Utilisation profile: DIALux presetting (5.1.4-Standard (outdoor transportation area))

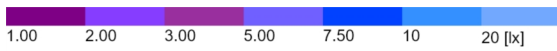
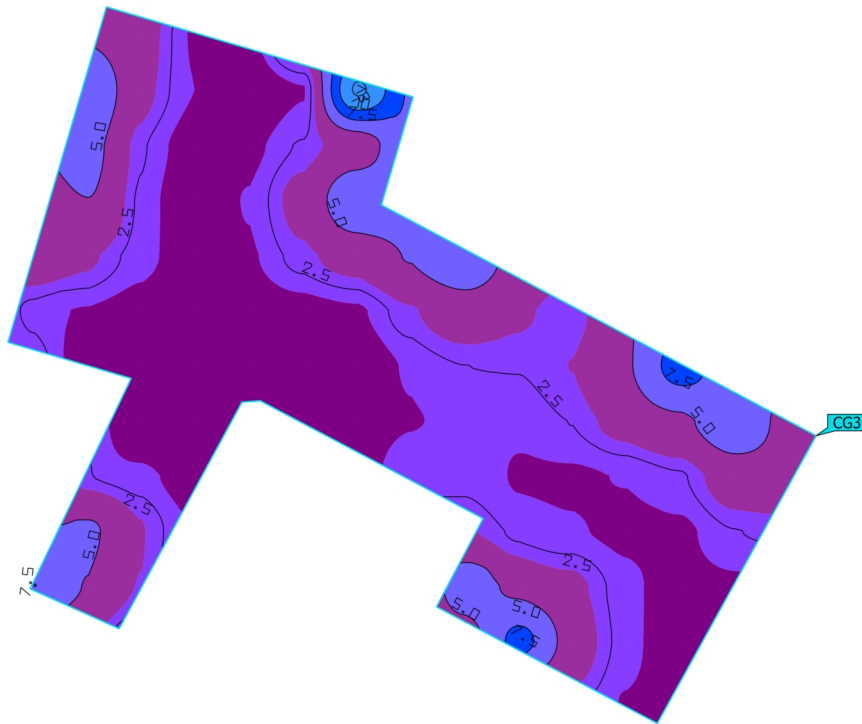
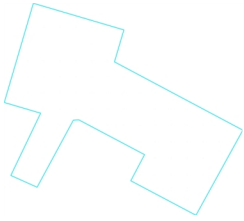
Site 1 (Light scene 1)  
**vej og p-plads**



Properties	$\bar{E}$	$E_{min}$	$E_{max}$	$U_0 (g_1)$	$g_2$	Index
vej og p-plads Hemispherical illuminance Height: 0.000 m	2.56 lx	0.66 lx	7.84 lx	0.26	0.084	CG2

Utilisation profile: DIALux presetting (5.1.4-Standard (outdoor transportation area))

Site 1 (Light scene 1)  
**Gårdrum**



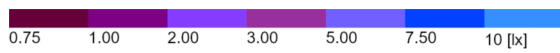
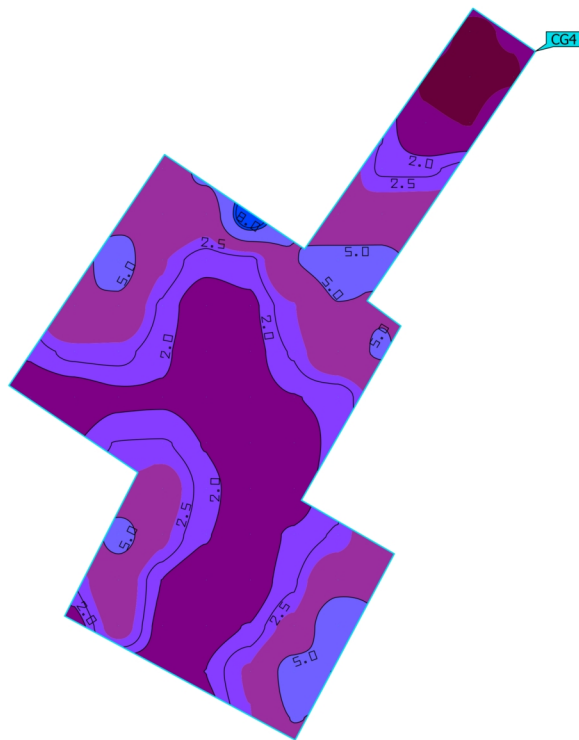
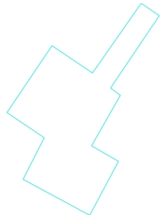
Properties	$\bar{E}$	$E_{min}$	$E_{max}$	$U_0 (g_1)$	$g_2$	Index
Gårdrum Hemispherical illuminance Height: 0.000 m	3.06 lx	1.24 lx	12.9 lx	0.41	0.096	CG3

Utilisation profile: DIALux presetting (5.1.4-Standard (outdoor transportation area))



Site 1 (Light scene 1)

**p-plads**

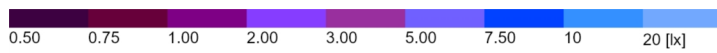
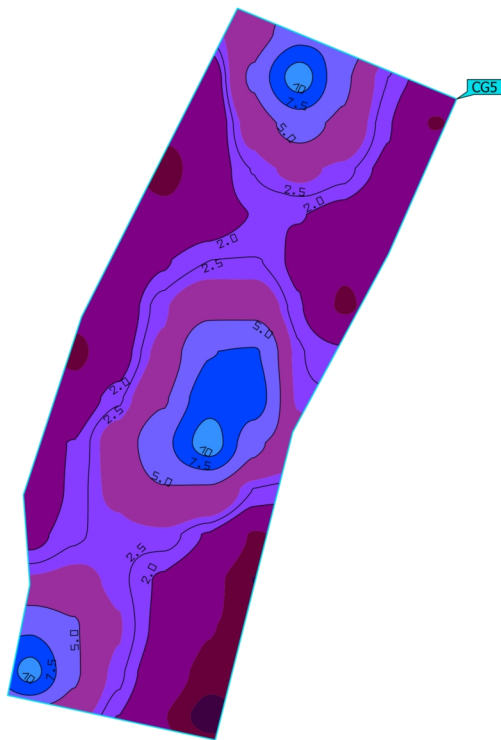


Properties	$\bar{E}$	$E_{min}$	$E_{max}$	$U_0 (g_1)$	$g_2$	Index
p-plads Hemispherical illuminance Height: -0.000 m	2.87 lx	0.77 lx	9.48 lx	0.27	0.081	CG4

Utilisation profile: DIALux presetting (5.1.4-Standard (outdoor transportation area))

Site 1 (Light scene 1)

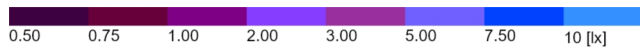
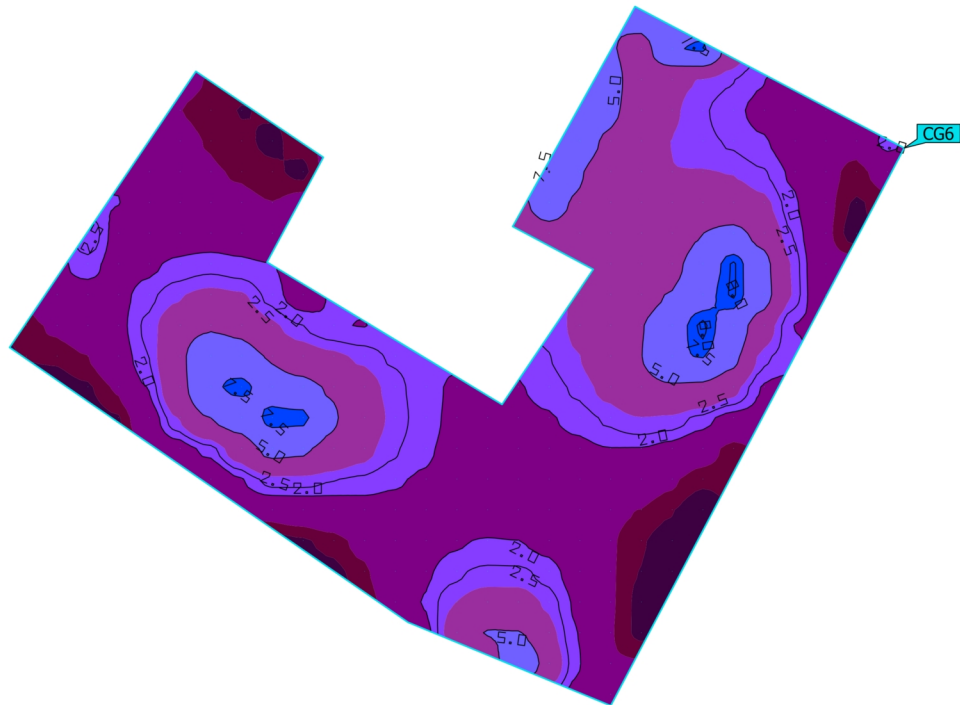
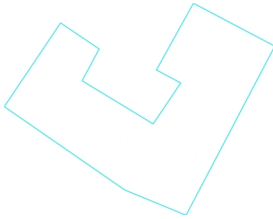
### Bygade



Properties	$\bar{E}$	$E_{min}$	$E_{max}$	$U_o (g_1)$	$g_2$	Index
Bygade Hemispherical illuminance Height: -0.000 m	3.17 lx	0.66 lx	11.2 lx	0.21	0.059	CG5

Utilisation profile: DIALux presetting (5.1.4-Standard (outdoor transportation area))

Site 1 (Light scene 1)  
**p-plads**

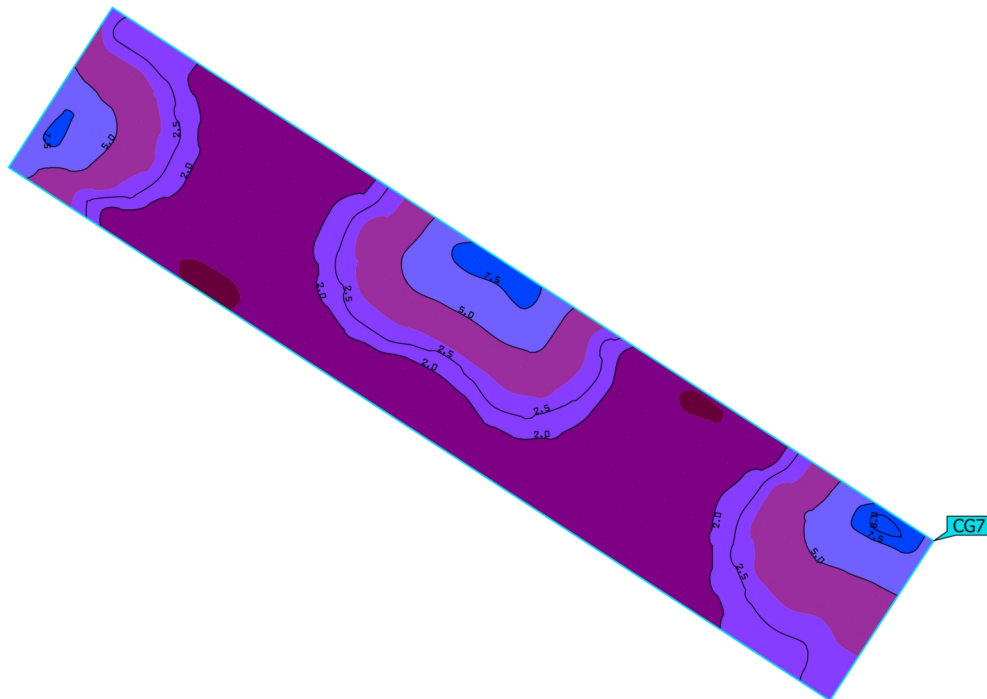
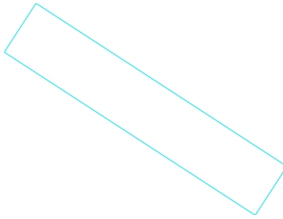


Properties	$\bar{E}$	$E_{min}$	$E_{max}$	$U_o (g_1)$	$g_2$	Index
p-plads Hemispherical illuminance Height: -0.000 m	2.78 lx	0.56 lx	8.14 lx	0.20	0.069	CG6

Utilisation profile: DIALux presetting (5.1.4-Standard (outdoor transportation area))

Site 1 (Light scene 1)

**Stræde**

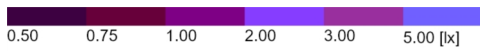
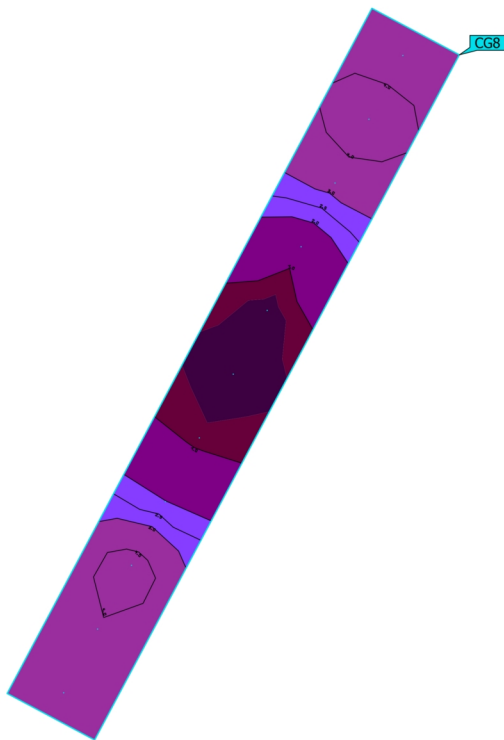


Properties	$\bar{E}$	$E_{min}$	$E_{max}$	$U_0 (g_1)$	$g_2$	Index
Stræde Hemispherical illuminance Height: -0.000 m	2.78 lx	0.94 lx	8.14 lx	0.34	0.12	CG7

Utilisation profile: DIALux presetting (5.1.4-Standard (outdoor transportation area))

Site 1 (Light scene 1)

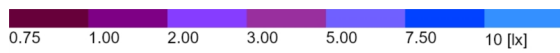
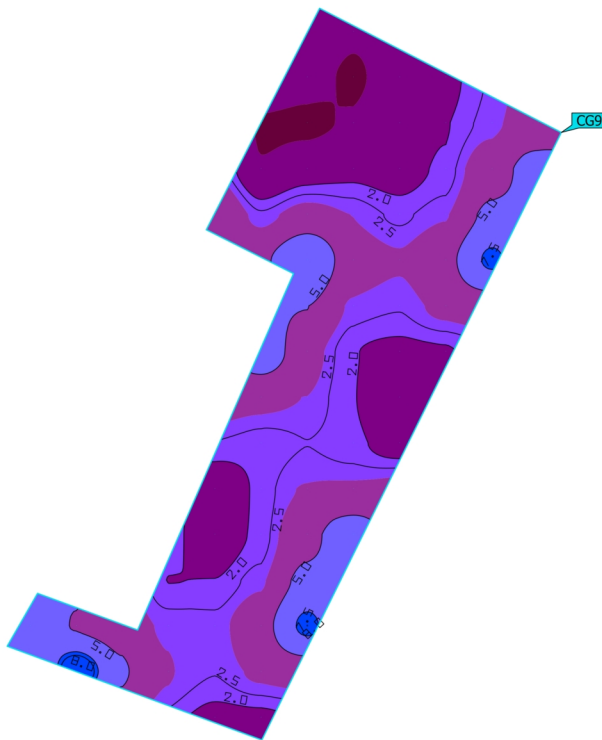
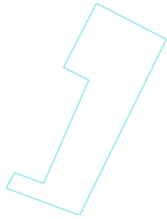
**Sti**



Properties	$\bar{E}$	$E_{min}$	$E_{max}$	$U_o (g_1)$	$g_2$	Index
Sti Hemispherical illuminance Height: 0.000 m	2.63 lx	0.52 lx	4.96 lx	0.20	0.10	CG8

Utilisation profile: DIALux presetting (5.1.4-Standard (outdoor transportation area))

Site 1 (Light scene 1)  
**P-plads Erhverv**



Properties	$\bar{E}$	$E_{min}$	$E_{max}$	$U_0 (g_1)$	$g_2$	Index
P-plads Erhverv Hemispherical illuminance Height: 0.000 m	3.15 lx	0.87 lx	9.28 lx	0.28	0.094	CG9

Utilisation profile: DIALux presetting (5.1.4-Standard (outdoor transportation area))